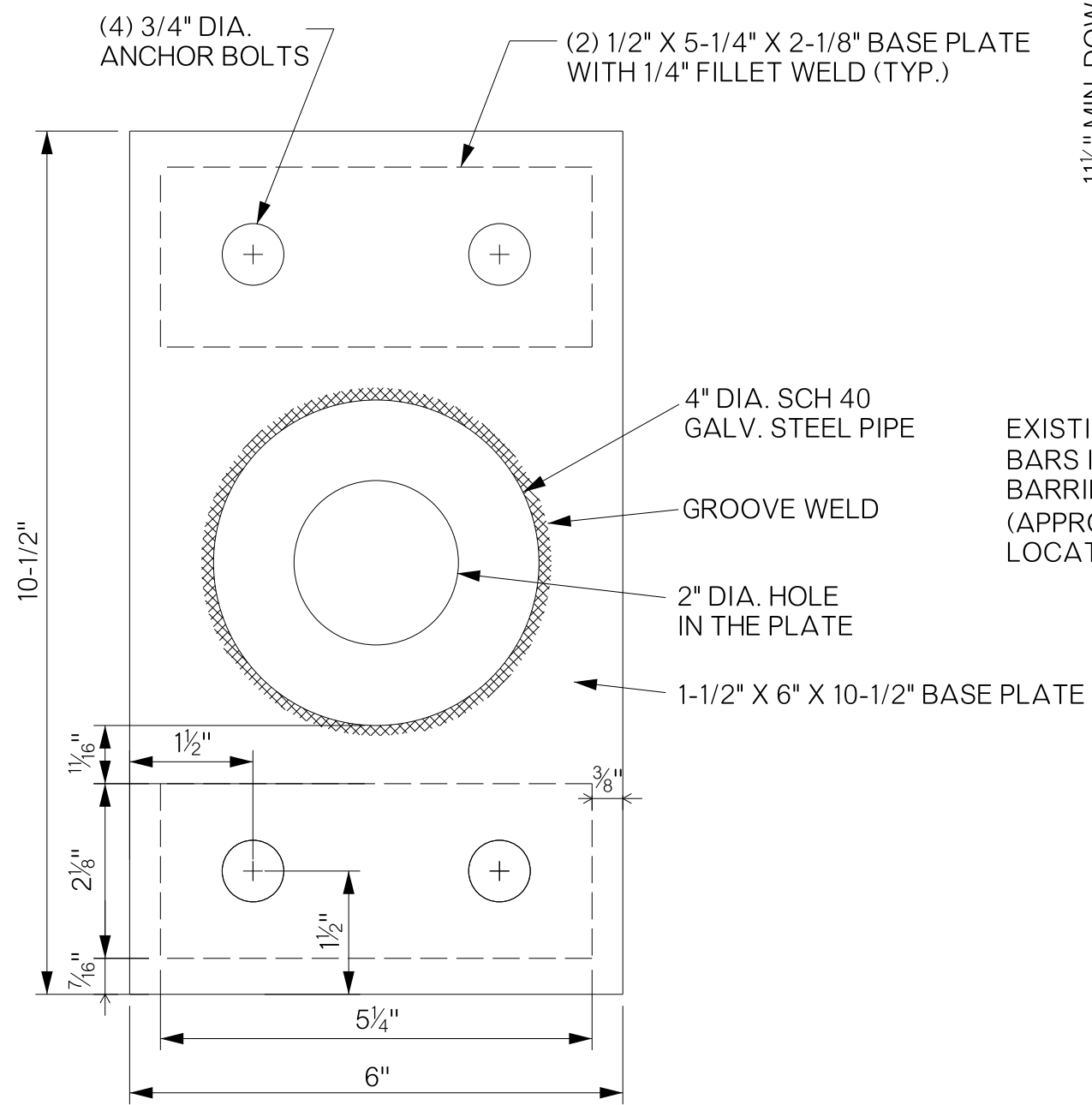
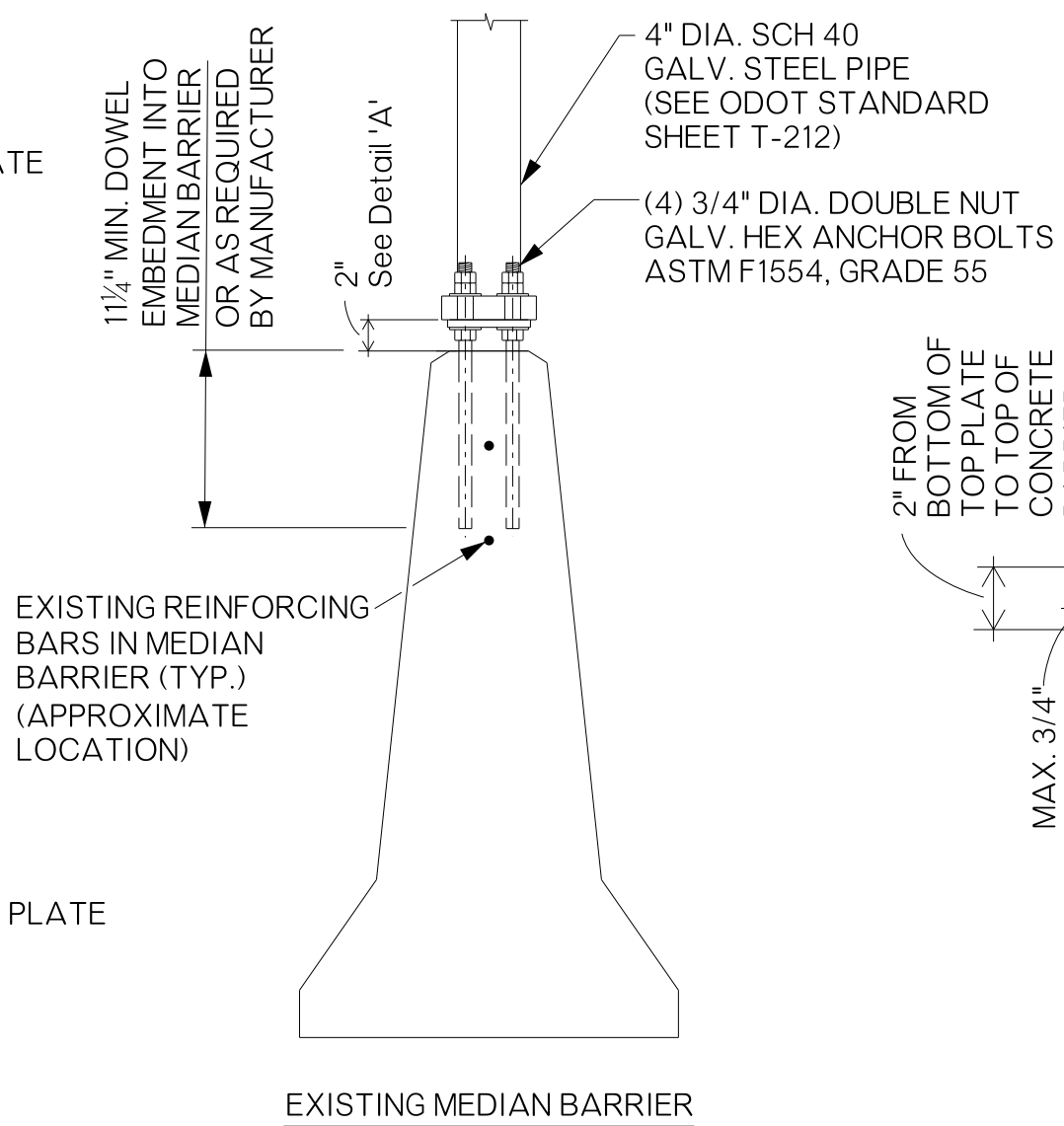


REVISIONS		
REV. NO.	DESCRIPTION	DATE
△	ADDED SHEET	8/5/16



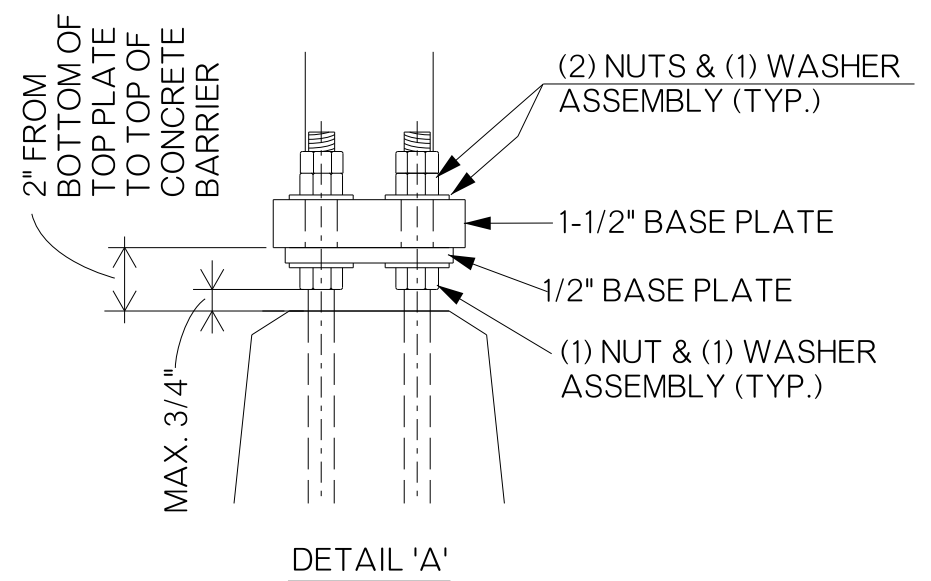
BASE PLATE DETAIL



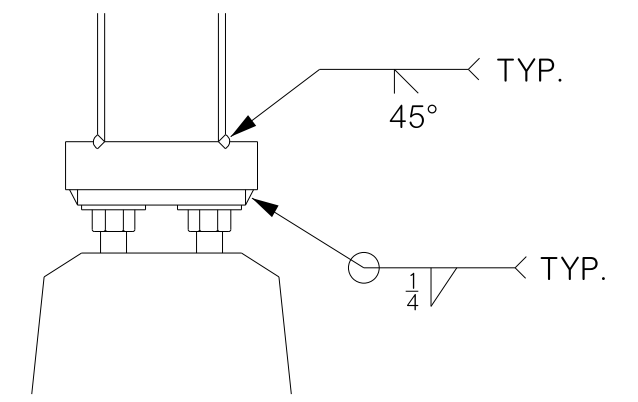
EXISTING MEDIAN BARRIER

WELDING NOTES

1. WELDING IN COMPLIANCE WITH AWS D1.1
2. ALL WELDING TO BE PERFORMED BEFORE GALVANIZING.



DETAIL 'A'



DETAIL 'B'

HARDESTY RD. AND US-177
SHAWNEE, OK

AUG 15, 2016

BASE PLATE DESIGN	Drawn	JF	8/16
	Design	JF	8/16
	Checked	AA	8/16
	TRAFFIC ENGINEERING		